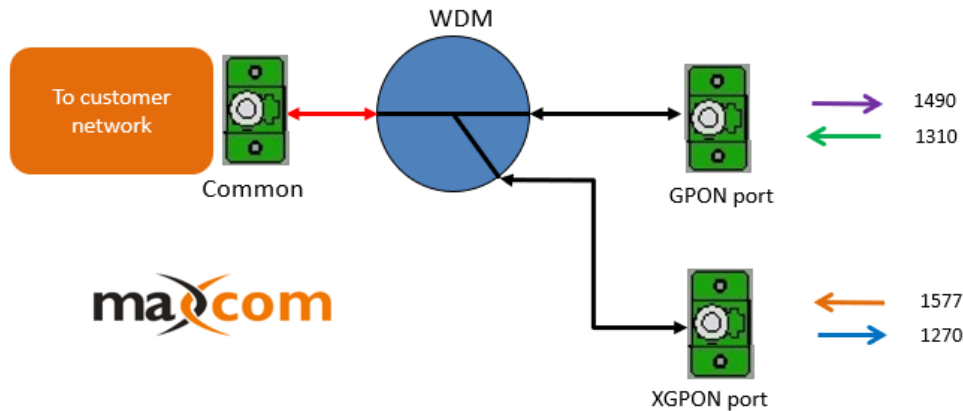
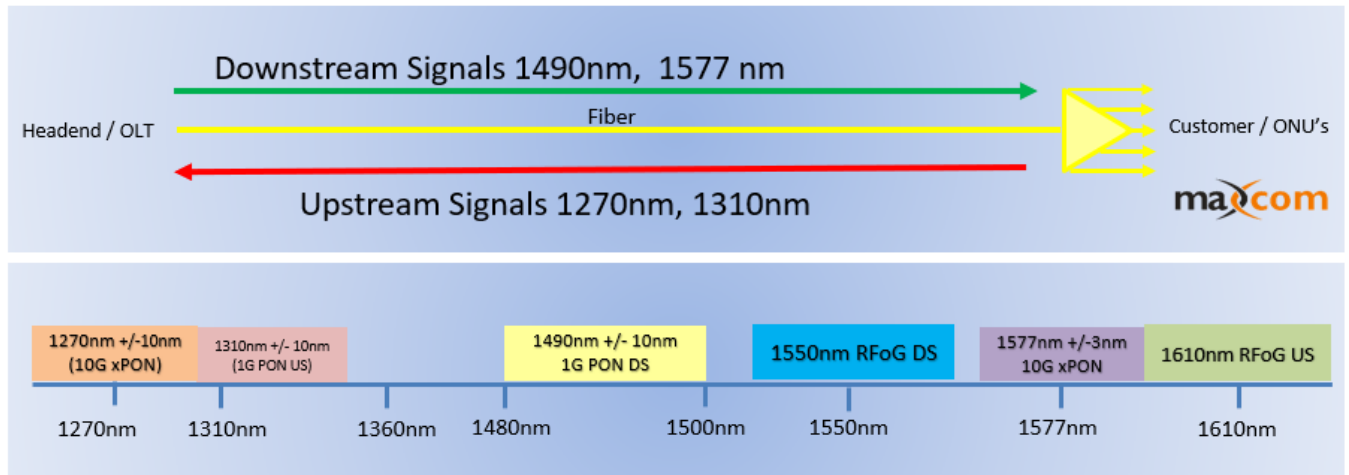


GPON~XG(S)PON Wavelength Division Multiplexer Specifications

WAVELENGTH DETAIL for GPON, xGPON, WDM Filter:

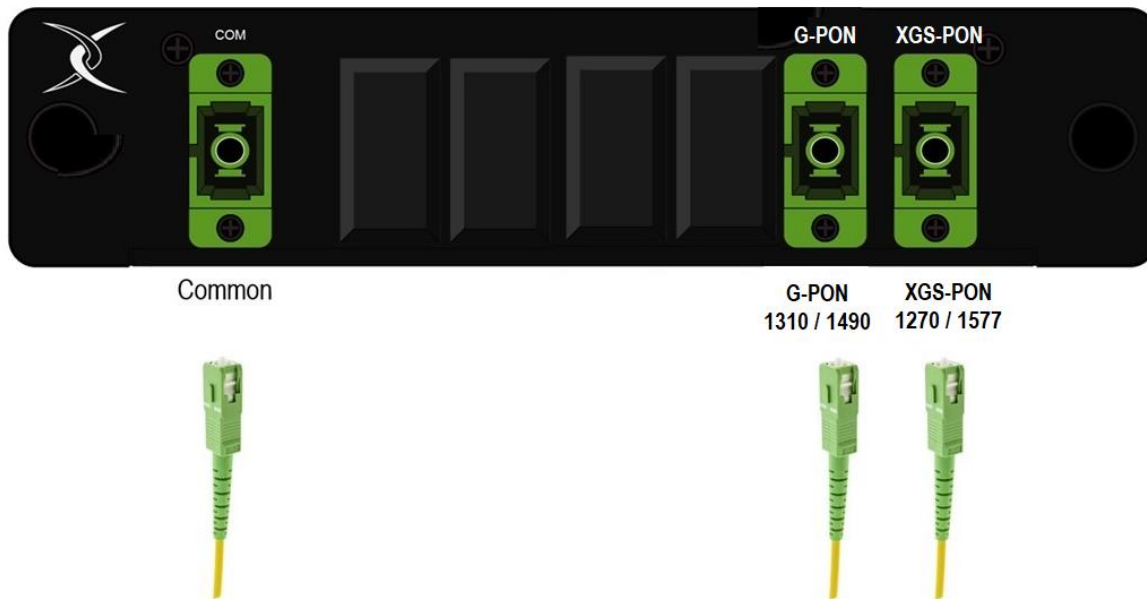


(All parameters are referenced without connectors. Typical connector loss 0.25 dB/pair)

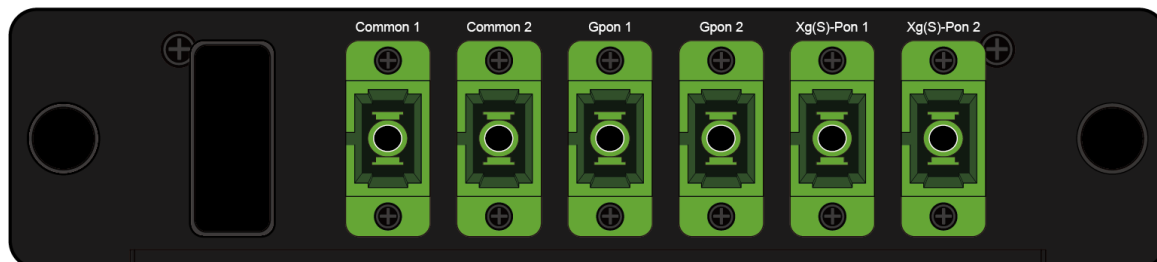
Parameters	Specifications	Unit
GPON Band	1290~1330 / 1480~1500	nm
XGPON Band	1260~1280 / 1575~1580	nm
GPON Band insertion loss	< 1.0/1.2	dB
XGSPON Band insertion loss	< 1.0/1.2	dB
Isolation	≥ 30	dB
PDL (Polarization dependence loss)	≤ 0.2	dB
PMD (Polarization mode dispersion)	≤ .2	ps
Return Loss	≥ 50	dB
Directivity	≥ 50	dB
Optical Power Handling	> 300	mW
Operating Temperature	-5~70	°C
Storage Temperature	-40~85	°C
Optical Connector Type	SC/APC or customer specified	



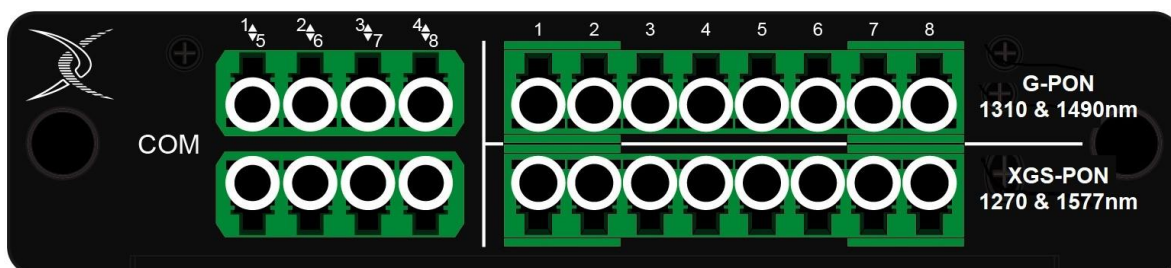
MX-G-X-PON-LGX Illustrated Diagram of LGX w/ Single Mux for G-PON and XGS-PON:
 *Example shown with SC/APC connectors



MX-G-X-PON-LGX2 Illustrated Diagram of LGX w/ Dual Mux for G-PON and XGS-PON:



MX-G-X-PON-LGX8 Illustrated Diagram of LGX w/ (8) Muxes for G-PON and XGS-PON:
 *Example shown with LC/APC connectors



Form factor, connector types and dimensions may be customized and fit into LGX type modules, tube type unit, 1RU rack mounted type or other customer specified shape.